

CHNT**BH-0.66,SDH-0.66**

Mounting Instructions
Paigaldusjuhised
инструкции за монтаж
Instrukcja montażu
Montageanleitung
Инструкция по монтажу
instructions de montage
asennus-ja käyttöohjeet
instruções de montagem
Monteringsveiledning
Montážní návod
Istruzioni di montaggio

instrucciones de montaje
Щодо монтування
Montaj Talimatları
Οδηγίες Εγκατάστασης
Instrucțiuni de montare
Monteringsanvisning
Montage instructies
Monteringsvejledning
Istruzzjonijiet ta ' muntagġ
Szerelési utasítás
Montāžas instrukcijas
Montavimo instrukcijos



Caution: Installation by electricians only

Ettevaatust: paigaldus elektrikud ainult

Внимание: инсталиране от електротехницисамо

Uwaga: Instalacja tylko przez wykwalifikowany personel

Vorsicht: Installation nur durch den Elektriker

Предупреждение: монтаж должен выполняться только квалифицированным электротехническим персоналом

ATTENTION : l'Installation par du personnel qualifié seulement

Varoitus: asennus sallittu vain sähköalan ammattilaiselle

Atenção: instalação pelos eletricistas somente

Advarsel: monteres kun av elektrikere

Varování: Montáž pouze osobou s elektrotech. kvalifikací

Attenzione: installazione solo da parte di personale addestrato

PRECAUCIÓN: instalación por electricistas sólo

Увага: монтаж електрики тільки

Dikkat : Kurulum sadece elektrikçiler tarafınca yapılmalıdır.

Προσοχή: εγκατάσταση να γίνεται από ηλεκτρολόγους μόνο

ATENȚIONARE: instalarea de electricieni numai

Varning: Monteras av behörig elektriker

Let op: installatie door electriciens alleen

Advarsel: monteres kun af elektrikere

Attenzjoni: installazzjoni mill-elettriciști biss

Figyelmeztetés: a telepítés a villanyszerelő csak

Piesardzigi: iekārtas, elektriķiem, tikai

Įspėjimas: montavimą privalo atlikti elektrikai

BH-0.66,SDH-0.66

Shape and installation dimensions

Kuju ja paigalduse mõõtmed

Размери на формата и монтажа

Kształt i wymiary montażowe

Form und Einbaumaße

Форма и размеры установки

Forme et dimensions d' installation

Muoto ja asennusmitat

Dimensões de forma e instalação

Utførelse og dimensjoner

Tvar a instalační rozměry

Dimensioni e dimensioni di installazione come mostrato in Figura 1 ~ Figura 9

Dimensiones de forma e instalación

Форма та розміри установки

Şekil ve montaj boyutları

Σχήμα και διαστάσεις εγκατάστασης

Forma și dimensiunile de instalare

Form- och installationsdimensioner

Vorm- en installatieafmetingen

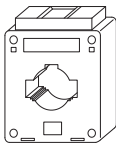
Form og installationsdimensioner

Forma u dimenzionijiet ta 'installazzjoni

Alak és a beépítési méretek

Formas un uzstādīšanas izmēri

Formos ir montavimo matmenys



1

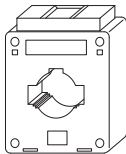
Installation
Paigaldamine
Инсталляция
Instalacja
Installation
Установка

Installation
Asennus
Instalação
Installasjon
Instalace
Installazione

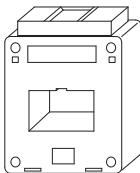
Instalación
Встановлення
Kurulum
Εγκατάσταση
Instalare
Installation

Installatie
Installation
Installazzjoni
Telepítés
Uzstādišana
Montavimas

2



BH-0.66



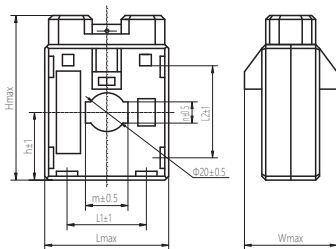
SDH-0.66

(mm)

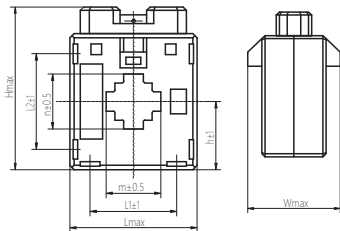
	Lmax	Wmax	Hmax	L1	L2	m	n	Φd			h	
BH-0.66 Solid type	69	84	87	38	-	5				15	37	
BH-0.66 20 I	62	35	81	33.5	-	6					32.5	
BH-0.66 30 I	61	34	81	32.5	-	7					33.75	
BH-0.66 30 I B	76	43	99	44	-	8					40.5	
BH-0.66 40 I	76	41	99	43.5	-	9					41	
BH-0.66 50 I	83	41	99	50	-	10					41	
BH-0.66 50 I	84	43	107	50	-							
BH-0.66 60 I	103	41	127	50	-	11					55	
BH-0.66 60 I	104	45	131	50	-							
BH-0.66 80 I	119	47	140	50	-	12					61	
BH-0.66 80 I	127	47	149	50	-							
BH-0.66 100 I	146	47	156	50	-	102	22	-	13		69	
BH-0.66 100 I	146	53	171	50	-	102	32.5	-		77	2500/54~3000/5A 0.5 1	
BH-0.66 120 I	191	47	138	50	-	126	36	62	14	60		
BH-0.66 120 I	197	47	173	50	-	130	60	70		78	2500/54~5000/5A 0.5 1	
SDH-0.66 40 II	80	47	105	45	-	42	31	-	-	16	44.5	
SDH-0.66 50 II	88	47	107	54	-	52	31.5	-	-		45.5	
SDH-0.66 50 II	88	47	121	54	-	52	31.5	-	-		52.5	750/54~1500/5A 0.5 1
SDH-0.66 60 II	103	49	111	53	-	62	31.5	-	-	17	43.75	
SDH-0.66 60 II	103	49	128	53	-	62	31.5	-	-		56	1500/54~2000/5A 0.5 1
SDH-0.66 80 II	123	48	119	60.5	-	82	32.5	-	-		54.5	
SDH-0.66 80 II	123	49	144	61	-	82	32.5	-	-		64	2000/54~2500/5A 0.5 1
SDH-0.66 100 II	141	51	123	74.5	-	102	32.5	-	-		53.5	
SDH-0.66 100 II	141	51	159	75	-	102	50	-	-		71.5	2500/54~3000/5A 0.5 1
SDH-0.66 120 II	171	49	156	54	-	122	52	-	-		69.5	
SDH-0.66 120 II	173	55	184	56	-	122	65	-	-		84	2500/54~4000/5A 0.5 1
SDH-0.66 170 II	262	55	222	120	-	170	102	-	-		103	
SDH-0.66 200 II	246	51	207	154	-	202	81	-	-	95.5		

(mm)

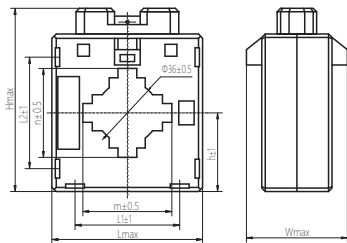
	Lmax	Wmax	Hmax	L1	L2	m	n	Φd			h	
BH-0.66 20 III	65	55	87	41	44.5	22	11	-	-	1	35	
BH-0.66 30 III	73	69	93	49	54	31	31	-	-	2	38.5	
BH-0.66 40 III	85	69	103	59	62	42	42	-	-		43.5	
BH-0.66 50 III	89	69	108	61	65	52	52	-	-	3	46	
BH-0.66 60 III	113	69	160	90	122	62	34	-	-	4	72	
BH-0.66 80 III	133	69	164	105	121	82	54	-	-		74	
BH-0.66 100 III	153	69	167	125	124	102	53	-	-		75.5	
BH-0.66 120 III	179	71	183	151	140	122	52	-	-		83.5	



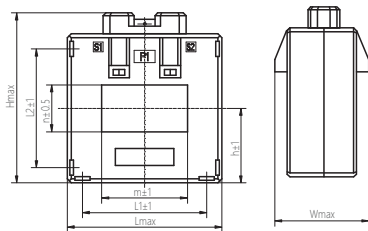
1 BH-0.66 20 III



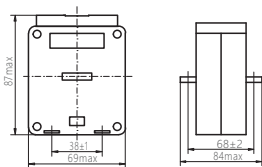
2 BH-0.66 30 III~40 III



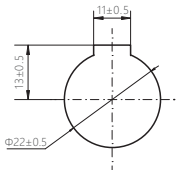
3 BH-0.66 50 III



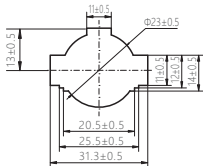
4 BH-0.66 60 III~120 III



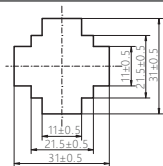
5 BH-0.66 Solid type



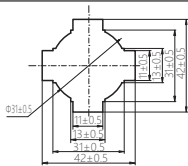
6 BH-0.66 20I



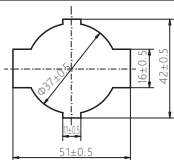
7 BH-0.66 30I



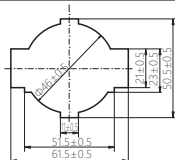
8 BH-0.66 30IB



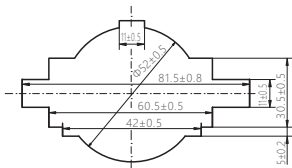
9 BH-0.66 40I



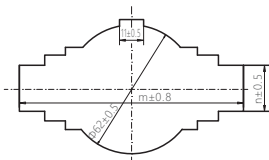
10 BH-0.66 50I



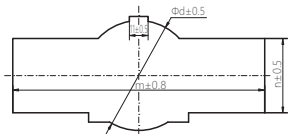
11 BH-0.66 60I



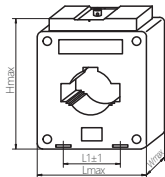
12 BH-0.66 80I



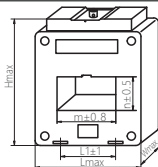
13 BH-0.66 100I



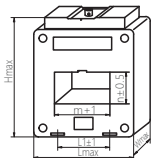
14 BH-0.66 120I



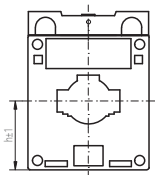
15 BH-0.66



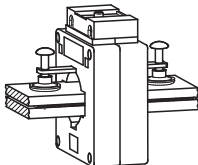
16 SDH-0.66 40II~50II



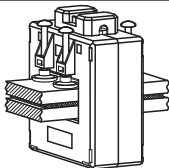
17 SDH-0.66 60II~200II



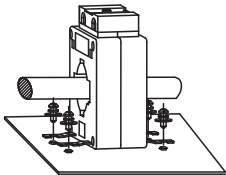
18 BH-0.66,SDH-0.66



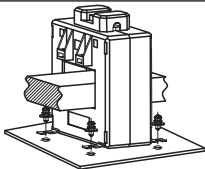
19



20



21



22

Debugging and use

- 1) Legend of debugging and testing procedures and methods
- 2) Operation procedure and method legend
- 3) Preparation and inspection of legend before use
- 4) Notes on safety protection and signs

Zhejiang Chint Electrics Co., Ltd.

BH-0.66,SDH-0.66

Add: No.1, CHINT Road, CHINT Industrial Zone, North Baixiang,
Yueqing, Zhejiang 325603, P.R.China

E-mail: global-sales@chint.com

Website: <http://en.chint.com>

